

MYLOR YACHT CLUB

COURSES AND COURSE CHARTLETS 2021

- Courses 1, 2 and 3 in all groups and course 4 in Group7: repeat the course until flag 'S' is displayed at the finish.
- MARKS SHOWN WITH A STAR AND IN GREEN (e.g. Pb☆) ARE TO BE LEFT TO STARBOARD; ALL OTHER MARKS ARE TO BE LEFT TO PORT**
- Courses in italics* are considered particularly suitable for low tides or other restrictions.
- For pursuit races, note that the last lap of the course after the gate may be repeated until the target finish time is reached.
- For all Groups Course 9 is at the Race Officer's Discretion. The course will be COMMUNICATED BY VHF ONLY.

										Total distance	First round			
GROUP 1 NORTH														
1	Jb	Gr	J	GATE repeat							2.25/lap			
2	Jb	V	Wt	GATE repeat							2.75/lap			
3	Me	Gr	Wt	GATE repeat							3.0/lap			
4	Me	Gr	Nb	GATE	Me	Pw	Nb	FINISH			4.5	2.5		
5	Tu	Gr	Nb	GATE	Jb	Gr	Pw	FINISH			5.5	3.25		
6	Tu	Gr	Pw	J	GATE	Jb	Gr	J	FINISH		6.25	3.5		
7	Tu	Ck	Gr	Wt	GATE	Me	Gr	Nb	FINISH		6.5	4.0		
GROUP 2 NORTH WEST														
1	Gr	Pw	J	GATE repeat							2.25/lap			
2	Wx	Gr	Pw	J	GATE repeat						2.5/lap			
3	Me	V	J	GATE repeat							3.25/lap			
4	Ck	Gr	Nb	GATE	Me	Gr	Nb	FINISH			4.4	2.7		
5	Wx	Gr	V	J	GATE	Wx	Gr	Nb	FINISH		5.7	3.5		
6	Re	Gr	J	GATE	Ck	Gr	J	FINISH			6.0	3.2		
7	Ck	Gr	V	GATE	Ck	Gr	V	J	FINISH		6.5	3.3		
8	Re	Gr	Pb☆	CC☆	GATE	Re	Gr	Pb☆	Wt☆	FINISH		7.8	4.8	
GROUP 3 WEST														
1	We	J	Pb	GATE repeat							2.0/lap			
2	We	V	Pb	GATE repeat							2.5/lap			
3	We	V	Wt	Pb	GATE repeat						2.7/lap			
4	We	V	Wt	Pb	GATE	We	Nb	J	Pb	FINISH		5.0	2.75	
5	We	CC	Pb	GATE	We	Nb	Pb	FINISH			5.1	3.5		
6	We	Nb☆	S	V	Pb	GATE	We	Nb☆	S	Wt	Pb	FINISH	5.7	3.0
7	We	J	Tu	Ck	Jb☆	GATE	We	Pw	J	Pb	FINISH	6.2	3.9	
GROUP 4 SOUTH WEST														
1	Pw	J	Jb	GATE repeat							2.0/lap			
2	Pw	Wt	Jb	GATE repeat							2.5/lap			
3	Pw	V	Wt	Jb	GATE repeat						2.75/lap			
4	Pw	J	Me	Gr	Pb☆	GATE	Pw	J	Jb	FINISH		5.3	3.3	
5	S	V	Pb	Jb	GATE	S	V	Jb	FINISH			5.6	3.0	
6	Pw	J	Tu	Ck	Pb☆	GATE	Pw	J	Jb	FINISH		6.0	4.0	
7	S	Pb☆	V	Wt	Jb	GATE	Pw	J	Jb	FINISH		6.0	4.5	
GROUP 5 SOUTH														
1	Pw	Jb	Me	GATE repeat							2.0/lap			
2	Pw	J	Me	GATE repeat							2.25/lap			
3	V	Wt	Me	GATE repeat							3.25/lap			
4	Nb	J	Pb	Me	GATE	Nb	J	Pb	Jb	FINISH		4.75	2.5	
5	V	Wt	Me	GATE	Nb	J	Jb	FINISH			5.25	3.5		
6	CC	Pb	Gr☆	Ck☆	GATE	Pw	Pb	Me	FINISH		7.0	4.3		
7	Nb	J	Pb	Re☆	Tu☆	GATE	Nb	J	Pb	Me	FINISH	8.2	4.6	

GROUP 6 SOUTH EAST											
1	Wt	Jb	We	GATE repeat					2.1/lap		
2	J	Pb	Gr	GATE repeat					2.25/lap		
3	J	Pb	Ck	GATE repeat					2.75/lap		
4	J	Pb	Me	Gr	GATE J	Me	Gr	FINISH			
5	J	Re	GATE		Wt	Pb	Gr	FINISH			
6	Wt	J	Ck	GATE J	Pb	Gr	FINISH				
7	Wt	J	Re	Ck	GATE J	Pb	Gr	FINISH			
GROUP 7 EAST											
1	Pb	Jb	We	GATE repeat					1.5/lap		
2	J ☼	Wt ☼	V ☼	Pw ☼	GATE repeat				1.75/lap		
3	Pb	Me	We	GATE repeat					2.0/lap		
4	Pb	Ck	We	GATE repeat					2.5/lap		
5	Pb	Ck	We	GATE	Pb	Me	We	FINISH			
6	Pb	Re	We	GATE	Pb	Me	We	FINISH			
7	Pb	Re	We	GATE	Pb	Ck	We	FINISH			
8	J ☼	S	V ☼	CC	Wt	Pw ☼	GATE J ☼	S	CC	Pw ☼	FINISH
5.8									3.0		
GROUP 8 NORTH EAST											
1	Jb	Me	Pw	GATE repeat					2.0/lap		
2	Pb ☼	Wt ☼	V ☼	S ☼	GATE repeat				2.2 /lap		
3	Jb	Ck	Pw	GATE repeat					2.5/lap		
4	Jb	Me	Pw	Nb	GATE Jb	Me	Pw	FINISH			
5	Jb	Gr ☼	Tu	Ck	Pw	GATE Jb	Me	Pw	FINISH		
6	Jb	Gr ☼	Tu	Ck	Pw	GATE Jb	Re	Pw	FINISH		
7	Tu	Re	V	GATE Jb	Ck	Pw	FINISH				
6.5									4.0		

MARKS: Ck Carrick), Me (Messack), Pill (Pill) and V (Vilt) are starboard hand lateral marks. J (St Just) and Nb (North Bank) are port hand lateral marks.

Yellow Club / MYH / PoFSA marks and approximate positions (and see chartlet below):

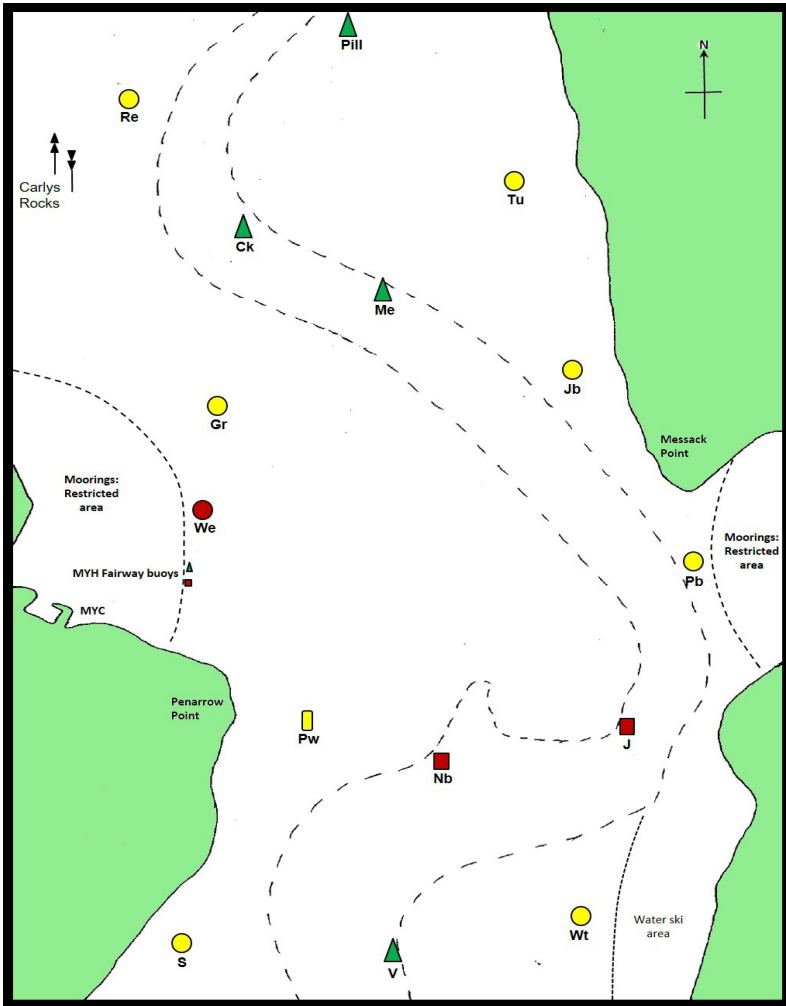
Re	50° 11'.80 N 005° 02'.80 W	Tu	50° 11'.71 N 005° 01'.95 W	S	50° 09'.99 N 005° 02'.67 W
Gr	50° 11'.14 N 005° 02'.65 W	Jb	50° 11'.22 N 005° 01'.95 W	CC	50° 09'.80 N 005° 02'.09 W
Pw	50° 10'.48 N 005° 02'.37 W	Wt	50° 10'.13 N 005° 01'.87 W	Pb	50° 10'.79 N 005° 01'.50 W

Orange club mark laid when required: We at approximately 50° 10'.90 N 005° 02'.50 W.

Orange club mark laid when required: Wx to windward of start line (Group 2 courses).

Unavailable mark If a mark is not available flag 'M' will be displayed on the committee boat and a yellow inflatable buoy displaying flag 'M' will be laid as an alternative mark, in the vicinity of the position of the unavailable mark.

UPPER HARBOUR CHART



Club Marks are sponsored by:

- Castaways**
- Cockwells**
- Mylor Chandlery and Rigging**
- Mylor Yacht Harbour**
- Penryn Dental Practice**

Prizes are sponsored by:

- BT Marine**
- Falmouth Boat Construction**
- Mylor Chandlery & Rigging**
- Penrose Sailmakers**
- Sailtech**
- SKB Sails**
- Skinners Brewery**

LOWER HARBOUR CHART

